

2. Specifications

Basic Specifications

SoC	RV1126
CPU	Quad-core ARM Cortex-A7 32-bit, integrates NEON and FPU Each core has a 32KB I-cache, 32KB D-cache and 512KB shared second-level cache Based on RISC-V MCU
NPU	2.0Tops, supports INT8/ INT16, It has strong network model compatibility, can realize the conversion of commonly used AI framework models, eg: Tensor Flow/MXNet/PyTorch/Caffe/...
RAM	1GB / 2GB DDR4
Storage	8GB / 16GB eMMC
Video Encoding	4K H.264/H.265 30fps video encoding: 3840 x 2160@30 fps+720p@30 fps encoding
Video Decoding	4K H.264/H.265 30fps video decoding: 3840 x 2160@30 encoding + 3840 x 2160@30 fps decoding

Hardware Features

Ethernet	Supports 10/100/1000M Ethernet, With TSO(TCP Segmentation Offload) network acceleration
WiFi	Via SDIO 3.0 interface
Display	Supports MIPI-DSI interface 1080P @ 60 FPS
Audio	8-channel I2S with TDM/PDM, 2-channel I2S
Camera	Supports 3 cameras simultaneous input: 2 groups of MIPI CSI (or LVDS/sub LVDS) and 1 group of DVP (BT.601/BT.656/BT.1120) Supports 14M ISP 2.0 with 3-frame HDR(Line-based/Frame-based/DCG)
Interface	USB 2.0 OTG , USB 2.0 host 1000M Ethernet port, with TSO(TCP Segmentation Offload) network acceleration SDIO 3.0x2 (for Wi-Fi and SD card) 8-channel I2S with TDM/PDM, 2-channel I2S UARTx6, SPIx2, I2C x6, GPIO, CAN, PWM

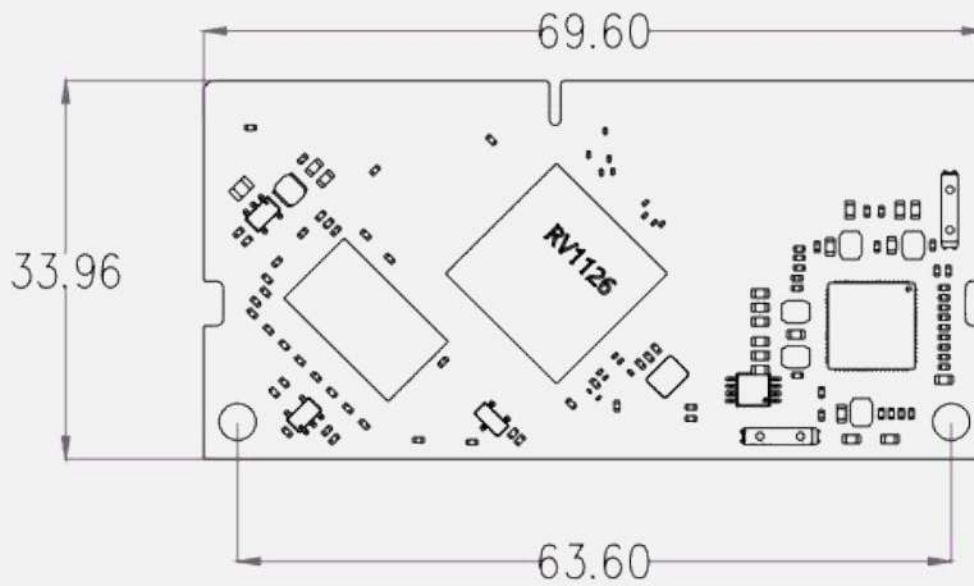
Software

OS	Linux
----	-------

General

Dimension	69.9mm x 33.96mm
Interface Type	Gold Finger (SODIMM 260P standard interface, 0.5mm distance)
Temperature	Operating Temperature: -20°C ~ 60°C Storage temperature: -20°C ~ 70°C
Operating Humidity	10% ~ 90 %

3. Size



4. Interface

SODIMM (260P, 0.5mm Pitch)



DDR3

RV1126
Quad-core ARM Cortex-A7, RISC-V MCU
NPU, up to 2.0 Tops



eMMC

DDR3