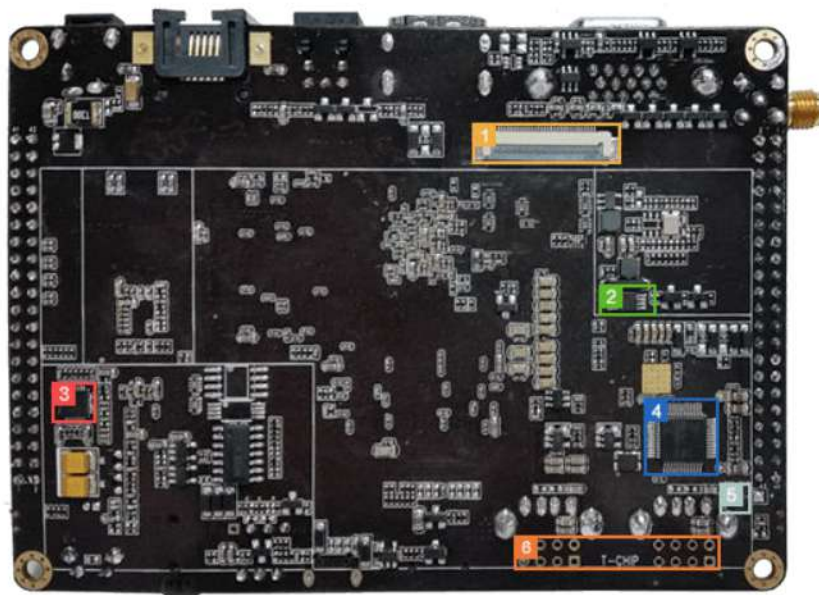


- 1 RK3288 Soc 2 2GB/4GB DDR3 3 16GB/32GB eMMC 4 AP6335 WiFi&BT 5 ACT8846 PMU
- 6 SG24301 TR 7 RTL8211E PHY 8 SDA7123 RGB->VGA 9 Debug Serial 10 MIC



- 1 Camera(MIPI-CSI,13MP) 2 HYM8563 RTC 3 ES8323 Codec
- 4 FB1.1 HUB 5 RTC_BAT Pad 6 USB2.0 Header

Types	Specifications
CPU	RK3288 (28 nanometer HKMG process) , ARM® Cortex™-A17 Quad-core 1.8GHz
GPU	ARM® Mali-T760 MP4 support OpenGL ES 1.1/2.0 /3.0, OpenVG1.1, OpenCL, Directx11 , Embedded high-performance 2D acceleration hardware Support 4K H.264 and 10bits H.265 video decoding , 1080P multi-format video decoding , Support the encoding of 1080P videos with H.264 , VP8 formats and MVC.
DDR	2GB dual channel (Dual-channel) DDR3
Memory	16 GB high-speed eMMC、 support MicroSD (TF) card
Power	Power Management : ACT8846 PMU
Network	10/100/1000Mbps Ethernet (Realtek RTL8211E)
WiFi	2-in1 WiFi module (AP6335) : Dual-frequency WiFi 2.4GHz/5GHz , support 802.11a/b/g/n/ac 协议 Bluetooth 4.0 (support BLE)
Video	Support multi-channel video high definition output : 1 x HDMI 2.0 , support 4K@60fps output 1 x VGA , support 1080P output 1 x MIPI、 1 x EDP、 2 x LVDS (LCD display interface)
Audio	1 x HDMI audio output 1 x Headset , for audio input / output 1 x SPDIF Digital audio interface , for audio output 1 x MIC for audio input 1 x I2S for audio input / output
Camera	1 x MIPI-CSI camera interface (up to 13Mpixel)
USB	2 x USB2.0 HOST ,1 x USB2.0 OTG , 4 groups of USB2.0 interfaces on the back of the board
Infrared	With a one-way infrared receiver, it has the function of infrared remote control.
LDE	1 x power state LED (blue) , 1 x user-defined LED (green)
Key	1 x Reset , 1 x Power key , 1 x Recovery Key
Debug	1 x Debug serial port , for Development and debugging
Interface	84 Pins header : MIPI、 MIPI-CSI、 Dual LVDS、 EDP、 PWM、 SPI、 UART、 ADC、 GPIO、 I2C、 I2S
Power	DC5V - 2.5A (via DC4.0*1.7mm Jack Socket)
OS	Android、 Linux、 Ubuntu、 Phoenix、 Flint OS
Size	118 mm × 85 mm
Weight	77g

unit : mm

