

Basic

SOC	RockChip RK3588
CPU	8-core 64-bit (4×Cortex-A76+4×Cortex-A55) , 8nm lithography process, frequency up to 2.4GHz
GPU	ARM Mali-G610 MP4 quad-core GPU Supports OpenGL ES3.2 / OpenCL 2.2 / Vulkan1.1, 450 GFLOPS
NPU	NPU computing power is up to 6 TOPS, Supports INT4/INT8/INT16 mixed operation, Supports framework switching of TensorFlow / MXNet / PyTorch / Caffe / etc.
ISP	Integrated 48MP ISP with HDR&3DNR
VPU	Video decoding: 8K@60fps H.265/VP9/AVS2 8K@30fps H.264 AVC/MVC 4K@60fps AV1 1080P@60fps MPEG-2/-1/VC-1/VP8 Video encoding: 8K@30fps encoding, Supports H.265 / H.264 * Achieves up to 32-channel 1080P@30fps decoding and 16-channel 1080P@30fps encoding
RAM	4GB/8GB/16GB 64bit LPDDR4/LPDDR4x/LPDDR5 (Up to 32GB optional)
Storage	16GB/32GB/64GB/128GB eMMC
Storage Expansion	1 × M.2 SATA3.0, can expand with 2242 SATA3.0 SSD, 4 × SATA3.0, can expand with 4 pcs of SATA3.0 SSD/HDD

Hardware

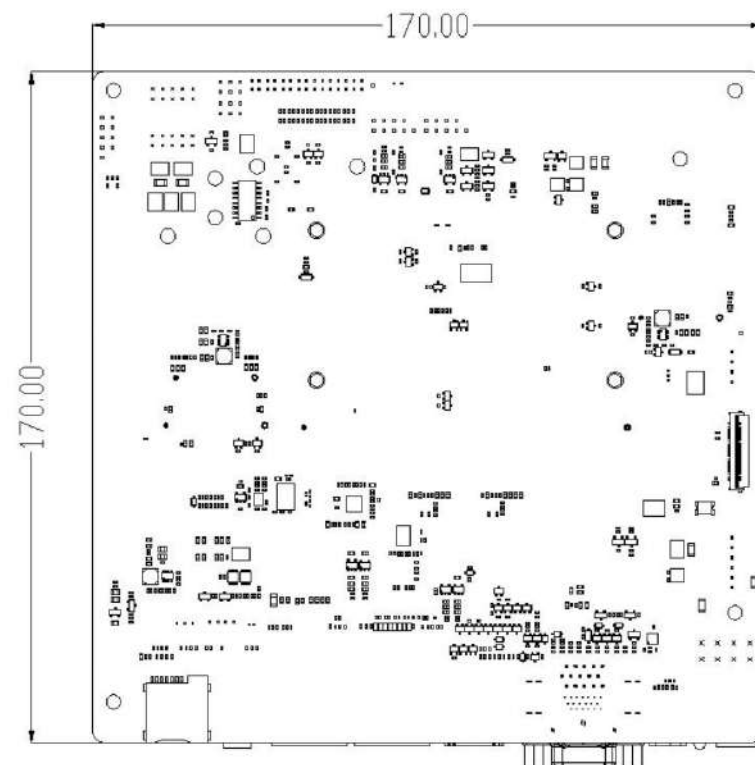
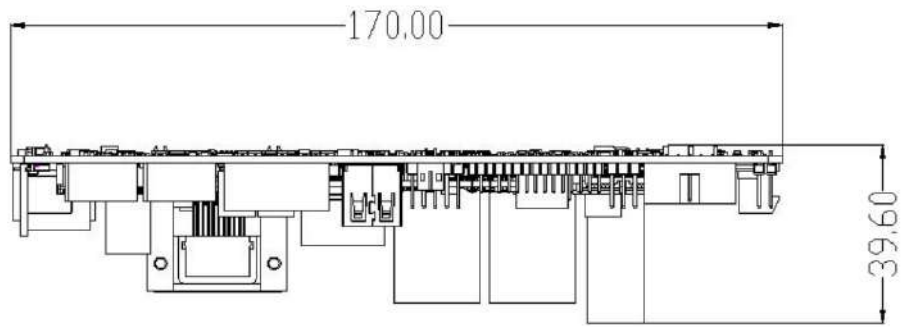
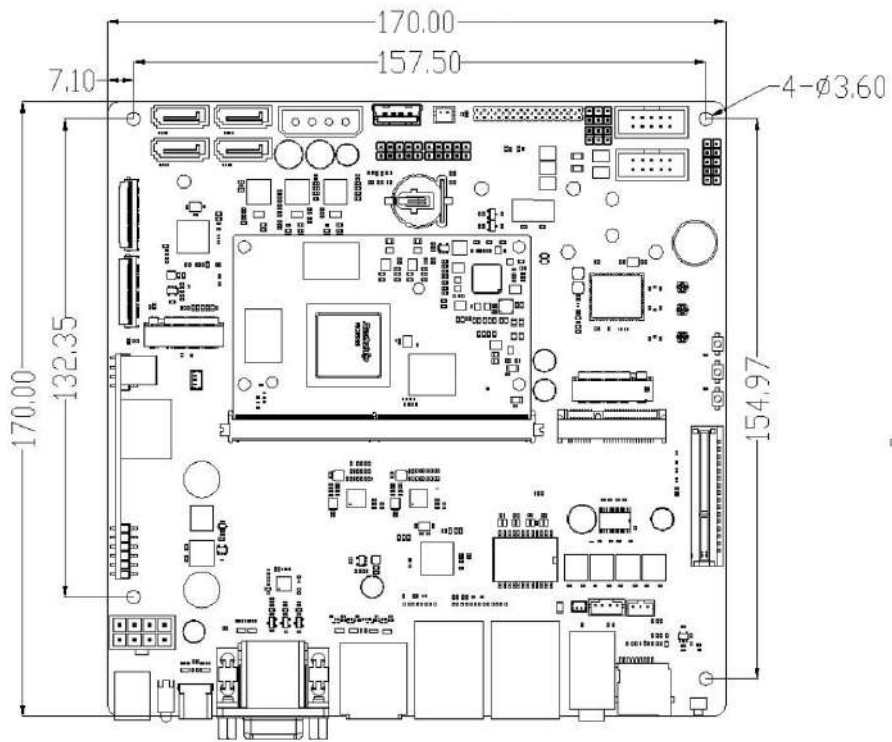
Wireless	2.4GHz/5GHz dual-band WiFi6, Bluetooth 5.0, supports 5G/4G LTE expansion
Ethernet	2 × 1000Mbps (RJ45) , one supports POE power supply, max output 60W
Display	Video output: 1 × HDMI2.1 (8K@60fps or 4K@120fps) 1 × HDMI2.0 (4K@60fps) 2 × MIPI-DSI (4K@60fps) 1 × DP1.4 (8K@30fps, multiplexed with USB3.0) 1 × VGA display output Video input: 1 × HDMI-IN (4K@60fps) , Supports HDCP 2.3 2 × 2 lane MIPI-CSI input or 1 × 4 lane MIPI-CSI input * Supports multi-channel 8K video output and 4K video input, up to four-screen output with different displays
Audio	Audio output: 1 × Speaker output (10W-8Q D class) 1 × Phone output 2 × HDMI audio output 1 × DP audio output Audio input: 1 × Line-In input 1 × MIC input 1 × HDMI audio input
PCIE	1 × PCIe3.0 (4Lane) , can expand with standard PCIe3.0 devices
SATA	1 × M.2 interface (SATA3.0) , 4 × standard SATA3.0 interface
USB	4 × USB3.0 (Limit 1A) 1 × USB-C (USB3.0 / DP1.4) (Limit 2A) 4 × USB2.0 (3 of them are pins) (Limit 500mA)
Power	Various power supply ways: DC12V input (DC5.5×2.1mm) Computer power supply 12V input (standard ATX power interface - 8Pin) POE 48V power input (up to 60W)
Other Interfaces	1×RS485 , 1×RS232, 8×GPIO, 4×I2C, 1×SPI, 3×ADC, 1×Debug, 2×UART (either-or RS485, RS232) , 1×Heating (12V) , 1×Fan (12V/3P-1.25mm)

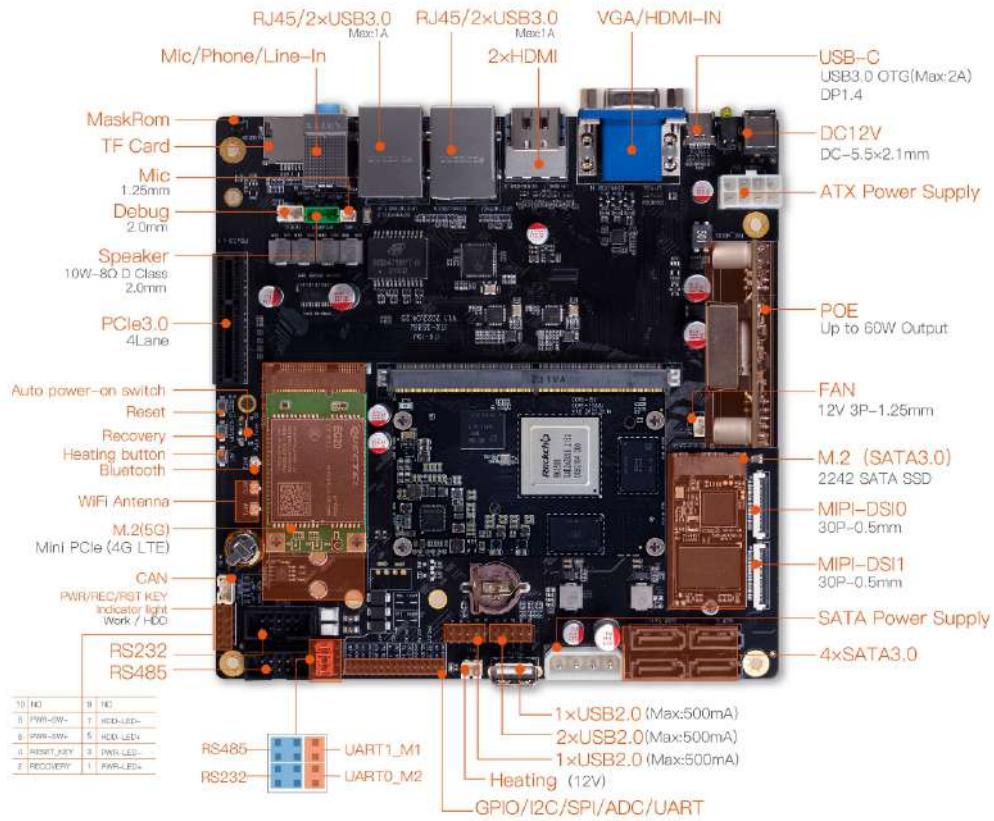
Software

OS	Android: Android 12.0 Linux: Ubuntu Desktop, Ubuntu Server, Debian11, Buildroot, RTLinux, Kylin Linux, UOS. Supports UEFI Boot
----	--

General

Size	17cm×17cm (Mini-ITX) , suitable for general ITX computer cases
Weight	About 300g (not including peripherals)
Heat Dissipation	Heat sink installation hole pitch: 45mm
Power Consumption	Idle: ≈1.35W (12V/110mA) Normal: ≈4.8W (12V/400mA) Max: ≈20W (12V/1700mA)
Environment	Operating Temperature: -20℃~60℃, Storage Temperature: -20℃~70℃, Storage Humidity: 10%-80%





MIPI-CSI
 2x2 lane MIPI-CSI Or 1x4 lane MIPI-CSI

