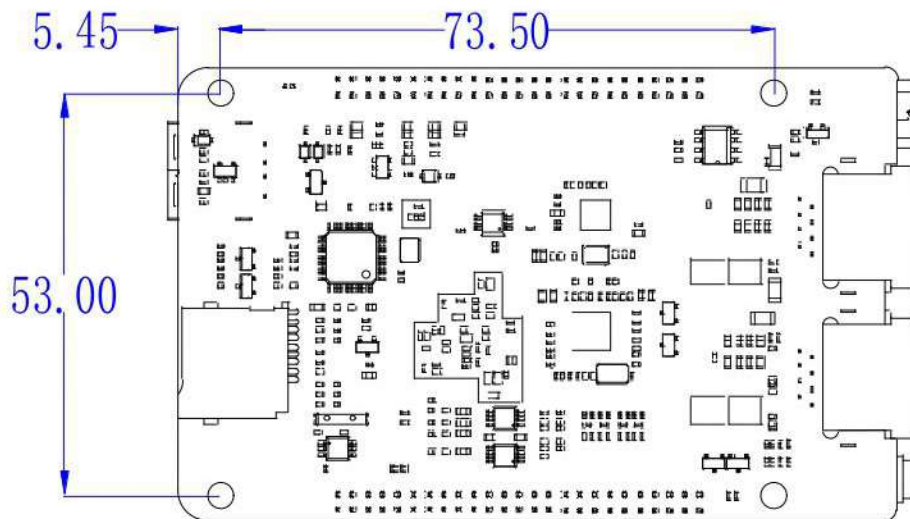
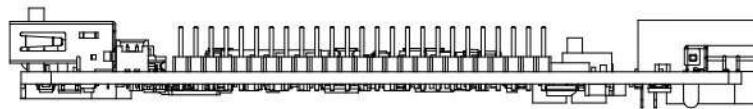
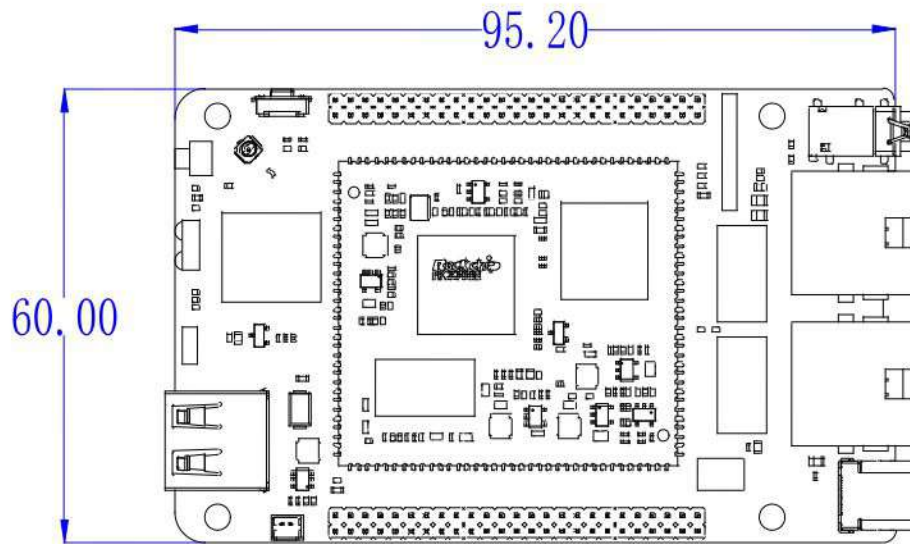


2. Technical Parameter

| Basic parameters | |
|-------------------|---|
| Soc | RK3308 (28nm process) |
| CPU | Quad-core 64-bit ARM Cortex-A35, frequency up to 1.3GHz |
| RAM | 256M DDR3 (128MB ~ 512MB) |
| Storage | 4GB eMMC supports 4G/8G/16G/32G/64G/128G NandFlash supports 128MB/256MB SPI Flash supports 16MB ~512 MB Support MicroSD (TF) Card Slot expansion |
| Hardware Features | |
| Ethernet | Dual Ethernet (RJ45 , 100M bps) |
| WiFi | Support 2.4GHz WiFi, support 802.11/b/g/n protocol |
| Display | Support RGB / MCU display (Maximum support 720P resolution) |
| Audio | Built-in CODEC, including ADC x 8 Integrated high-performance Codec and Hardware VAD and support up to 8 channel analog MIC arrays directly Support digital audio interface (8CH I2S/TDM x 2, 8CH PDM, 2CH I2S/PCM) |
| USB | USB 2.0 × 1、 Type-C × 1 (OTG) 、 USB2.0×1 |
| Debug | Debug × 1 |
| Interface | PWM×3、 I2C×3、 UART×3、 SPI×1、 I2S×1、 ADC×4、 LineOut。 |
| Microphone Array | It can be configured with a far-field microphone array board, including 4 digital / analog MIC. It supports keyword wakeup, echo cancellation and noise reduction, VAD (Voice Activation Detection) and sound source location etc., which can significantly improve the accuracy and precision of automatic speech recognition. |
| Temperature | Operating temperature: 0°C - 60°C |
| Software / OS | |
| Software / OS | Support Buildroot, Linux + MiniGUI / QT, ROS (Robot Operating System) multiple operating systems Support a variety of voice systems and services, such as iFLYTEK, Amazon Alexa and so on. |
| Appearance | |
| PCB Size | 95.15mm × 60.00 mm |

3. PCB Size



4. Interface definition

