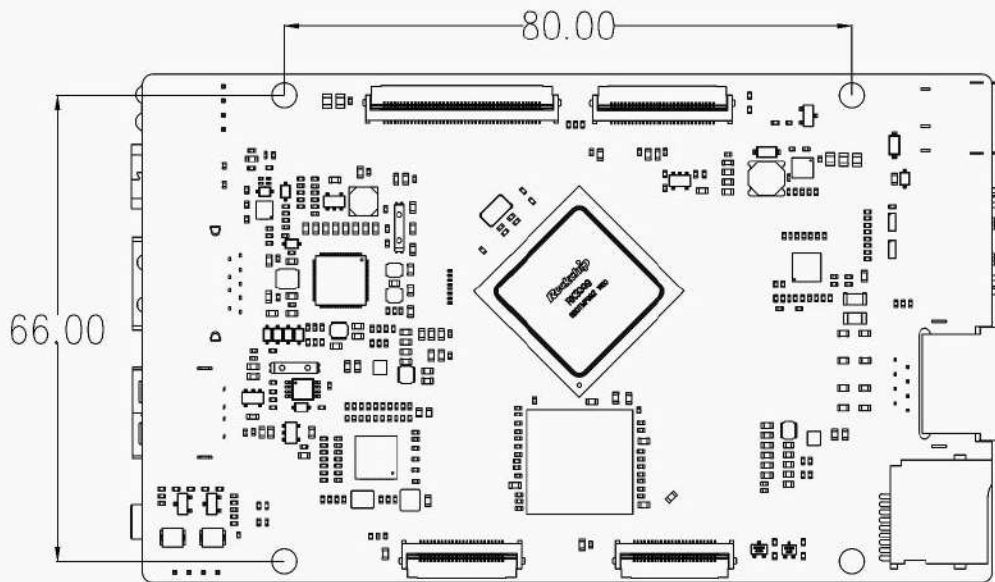
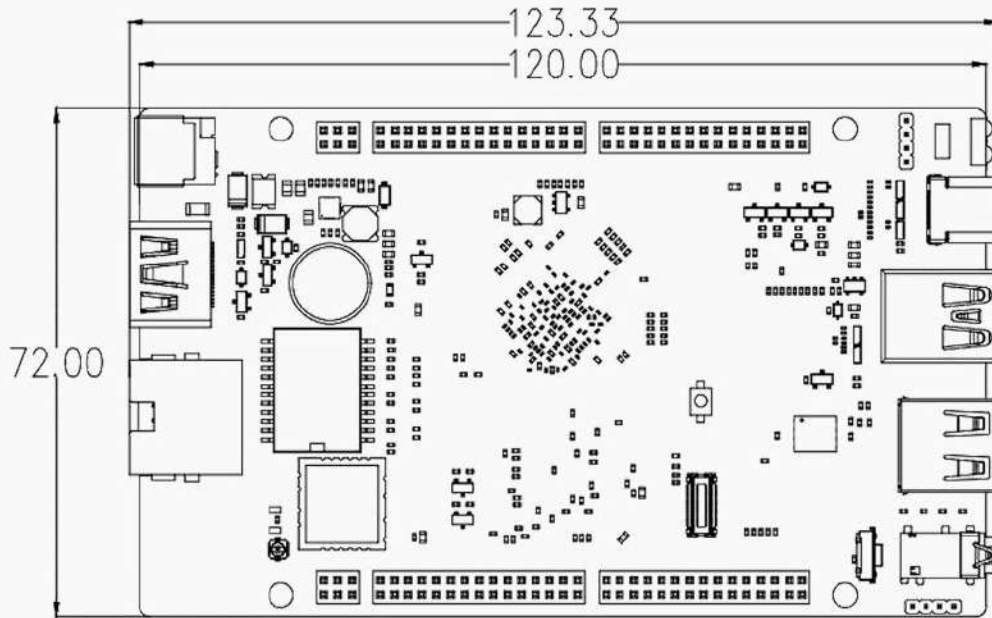


## 2. Product Specification

Specification	
SoC	RK3399, Six-core 64-bit ( dual-core A72+ quad-core A53)processor, frequency up to 1.8GHz
CPU	Six-core ARM® 64-bit processor, frequency up to 1.8GHz Based on big.LITTLE core architecture, dual-core Cortex-A72(big core)+ quad-core Cortex-A53(little core)
GPU	Mali-T860 MP4 quad-core GPU, support OpenGL ES1.1/2.0/3.0/3.1, OpenVG1.1, OpenCL, DX11
VPU	Support 4K VP9 and 4K 10bits H265/H264 video decoding, up to 60fps 1080P multi-format video decoding (WMV, MPEG-1/2/4, VP8) 1080P video coding, support H.264,VP8 format Video post processor: de-interlacing, de-noising, edge/detail/color optimization
RAM	4GB LPDDR4 dual-channel 64-bit RAM
Storage	Onboard SPI Flash(16MB) Optional high-speed eMMC(16GB/32GB/128GB) Support MicroSD(TF card), USB flash disk expansion Support expansion board M.2 M-Key to expand SSD
Hardware Features	
Ethernet	10/100/1000Mbps Gigabit Ethernet (RJ45 interface)
WiFi	WiFi 2.4GHz 802.11b/g/n, Bluetooth 4.2(support BLE)
Display	HDMI2.0 support 4K 60Hz display, support HDCP 1.4/2.2 DP1.2 (DisplayPort 1.2 support up to 4K 60Hz) Support eDP 1.3 Support MIPI-DSI(dual-channel) Support Type-C + HDMI dual display, support 4K + 2K output
Audio	1 x Phone( 3.5mm), 1 x HDMI, 1 x DP Support LINE_IN and LINE_OUT
Camera	2x MIPI-CSI (Built-in dual ISP, Maximum support single 13Mpixel or dual 8Mpixel)
USB	1 x USB 2.0, 1 x USB3.0, 1 x Type-C (USB3.0 / DP1.2 / OTG)
Key	1 x Recover(Located at the end of the 3.5mm audio port)
IR	Support infrared remote control
Power	DC12V-2A(5.5*2.1mm) Support POE+ (802.3 AT, output power 30W)
OS/Software	
OS	Support Android, Ubuntu, PhoenixOS Support Firefly Geek Entertainment System--Station OS, Desktop and Media mode, seamless switching between study, entertainment, and work
Appearance	
Size	120 mm × 72 mm × 11.2 mm

### 3. PCB Size



## 4. Interface description

