

Basic

SOC	RockChip RK3568J
CPU	Quad-core 64-bit Cortex-A55, 22nm lithography process, frequency up to 2.0GHz
GPU	ARM G52 2EE Supports OpenGL ES 1.1/2.0/3.2, OpenCL 2.0, Vulkan 1.1 Embedded high-performance 2D acceleration hardware
NPU	Integrated high-performance AI accelerator RKNN NPU, 0.8Tops@INT8 Supports one-click switching of Caffe/TensorFlow/TFLite/ONNX/PyTorch/Keras/Darknet
VPU	Supports 4K 60fps H.265/H.264/VP9 video decoding Supports 1080P 60fps H.265/H.264 video encoding Supports 8M ISP, supports HDR
RAM	1GB / 2GB / 4GB / 8GB LPDDR4
Storage	8GB / 16GB / 32GB / 64GB / 128GB eMMC 16 MB SPI Flash

Hardware

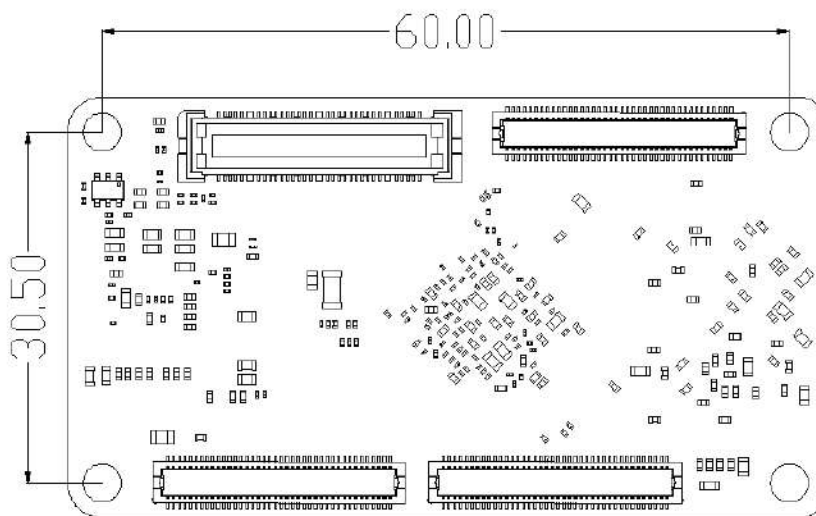
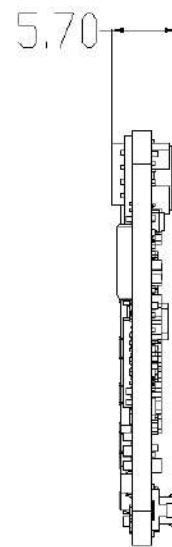
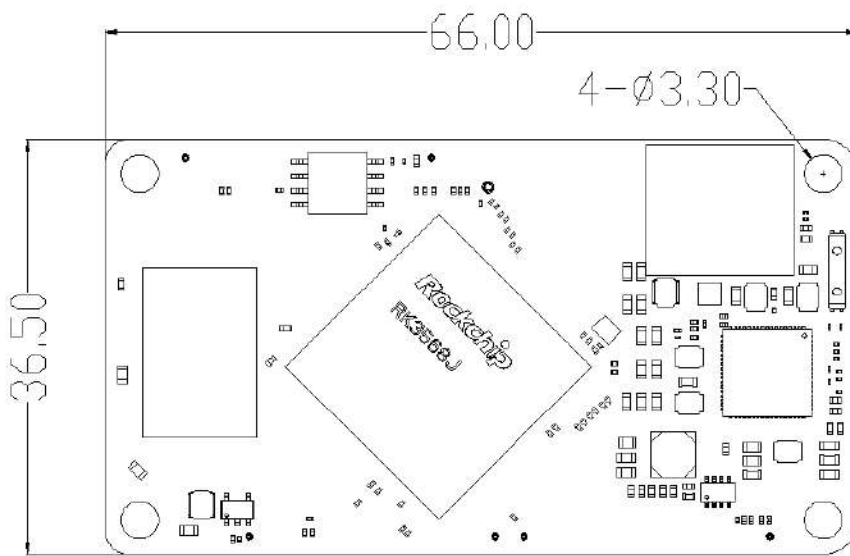
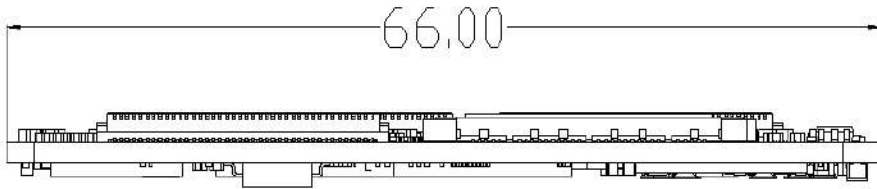
Ethernet	Integrated GMAC, supports 2xRJ45 Ethernet (1000Mbps)
Wireless	Through SDIO port can expand to WiFi+Bluetooth module – Supports 2.4GHz / 5GHz WiFi, WiFi6, 802.11a/b/g/n/ac/ax protocol – Supports Bluetooth 5.0 Supports 5G / 4G LTE extension
Display	1 x HDMI2.0, Supports 4K@60 Hz 2 x MIPI DSI, Supports 1920 * 1080@60fps (or dual-channel 1 x MIPI DSI 2560*1440@60fps) 1 x eDP1.3, Supports 2560 * 1600@60fps 1 x RGB display, Supports 1920 * 1080@60Hz 1 x single LVDS LCD display * Supports up to three screen output with different display
Camera	1 x MIPI CSI (can become single-channel 4Lan MIPI CSI or dual-channel 2Lan MIPI CSI) 1 x CIF
Audio	1 x HDMI 2 x I2S/PCM(2ch)/TDM(8ch)
PCIE	1 x PCIe 3.0 (2Lane) 1 x PCIe 2.1 (1Lane)
SATA	3 x SATA 3.0
USB	2 x USB 3.0, 2 x USB 2.0
Extension	3 x SDMMC 3 x SPI 10 x UART 6 x I2C 2 x I2S/PCM(2ch)/TDM(8ch) 16 x PWM 7 x ADC 3 x CAN 125 x GPIO
Power	5V (Deviation±5%)

Software

OS	Supports Android 11.0 , Ubuntu 18.04, RTLinux
----	---

General

Size	66 mm × 36.5mm
Weight	About 16g
Connector	BTB connector (1x60Pin + 3x80Pin)
Heat Dissipation	Heat sink installation hole pitch: 45mm, matched heat sink is recommended (Click to See)
Consumption	Idle: 0.015W Normal: 2.75W Max: 5.55W
Environment	Operating Temperature: -40°C-85°C, Storage Humidity: 10%-80%

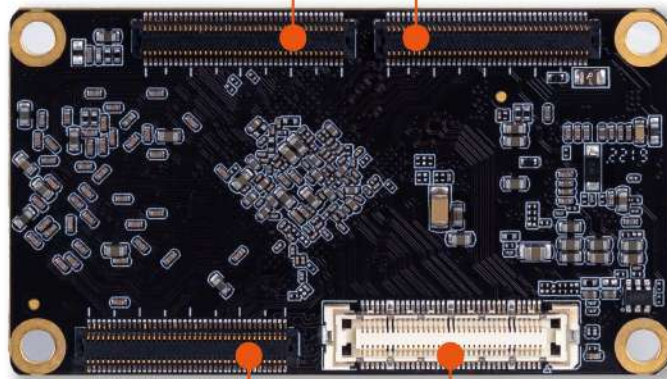


SDMMC/ETHERNET/USB2.0/GPIO/I2C
(BTB座, 80P-0.5mm)

J3

MIPI-CSI/MIPI-DSI/POWER/GPIO
(BTB座, 80P-0.5mm)

J1



ETHERNET/SDMMC/GPIO/ADC/I2C
(BTB座, 80P-0.5mm)

J4

USB3.0/eDP/PCIe3.0/HDMI/SATA
(BTB座, 60P-0.5mm)

J2

